

HOW TO TRANSFER MINI DV TAPED VIDEOS TO DIGITAL VIDEOS ON YOUR PC

By Dennis McGillicuddy

Product: Roxio Easy VHS to DVD 3

After trying several transfer/conversion products to transfer all my old Mini DV tapes, I finally found one that works. It is called Roxio Easy VHS to DVD 3. So, several years ago I purchased a Samsung SCD27 MiniDV Camcorder (Figure 1).



FIGURE 1 – Samsung SDC27 Camcorder

I collected many tapes of family events, but rarely got a chance to view the output. Fearing the degeneration of the tapes over time I decided to transfer them to digital. However, this was not a simple process. I tried several Analog to Digital conversion devices and applications including EZCAP, DVDEXPRESS and some free applications online. I would have used a conversion company, but I have so many tapes the cost would have been too high. I finally saw a video online [How to Transfer Your Mini DV Tapes to Digital or DVD](#) and this provided me with the incentive to try one last product, which worked. The product is Roxio Easy VHS to DVD 3 Plus and cost under \$70 at Best Buy. (Figure 2 and 3)



FIGURE 2 – Roxio Easy VHS to DVD3 Plus package



FIGURE 3 - ROXIO VHS to DVD 3 Plus Device

Starting ROXIO Easy VHS to DVD 3

Hooking up the system was not too difficult. It was just a matter of deciding which cables to use and how to use the application. After testing the S-Video vs. the Composite video cable, I noticed a slight improvement in quality of the image with the S-Video cable that comes with the camcorder. An S-Video cable (Figure 4) can be purchased separately if you do not have one.



FIGURE 4 – S-VIDEO Cable 4 Pin Male End



FIGURE 5 – S-VIDEO 4 Pin Female connection

Install the ROXIO Easy VHS to DVD 3 Plus program. I installed it on Windows 10 with no problems.

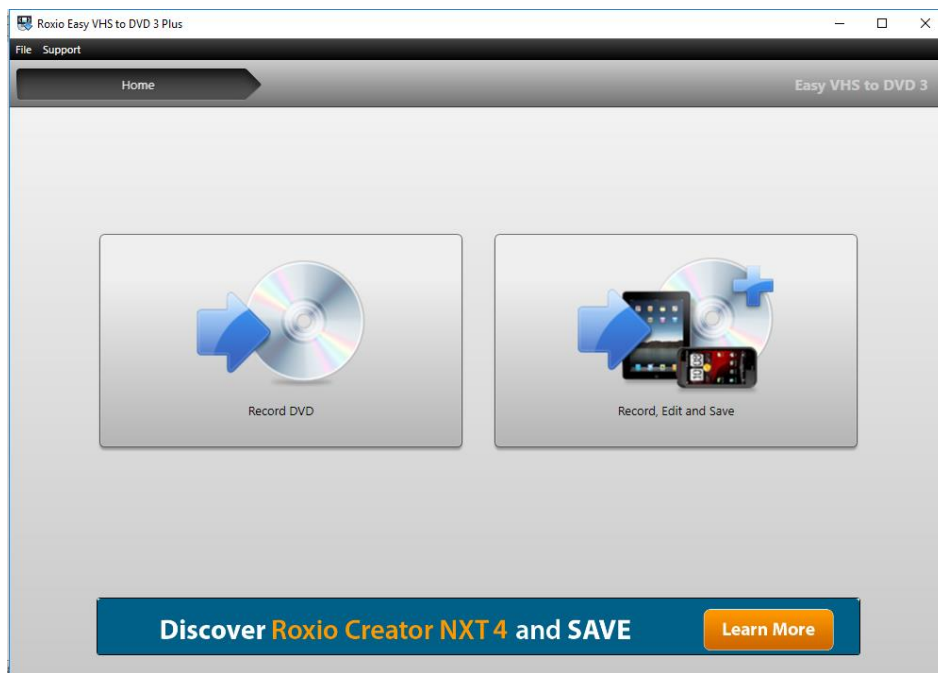


FIGURE 6 - Initial opening screen

I use the **Record, Edit and Save** button (Figure 6) to begin the transfer process as well as to burn the final video(s) to a DVD with a menu. (More on this menu later - See Figure 14)

CONNECTING THE CAMCORDER

I plugged the AC Power Cord to the camcorder into the DC IN Connector. (Figure 7)



FIGURE 7 – Image showing DC IN connection with power cable inserted

I put a Mini DV tape into the tape chamber. (Figures 8-11)



FIGURE 8 – Image showing location of Cartridge Cage and Ejection button as well as location of Sony Flash Card slot for Photos



FIGURE 9 – Open Cartridge Cage



FIGURE 10 – Image showing cartridge inserted into cage/carriage

Pull up and out any tape in the carriage to insert a new tape. (Figure 10 & 11)

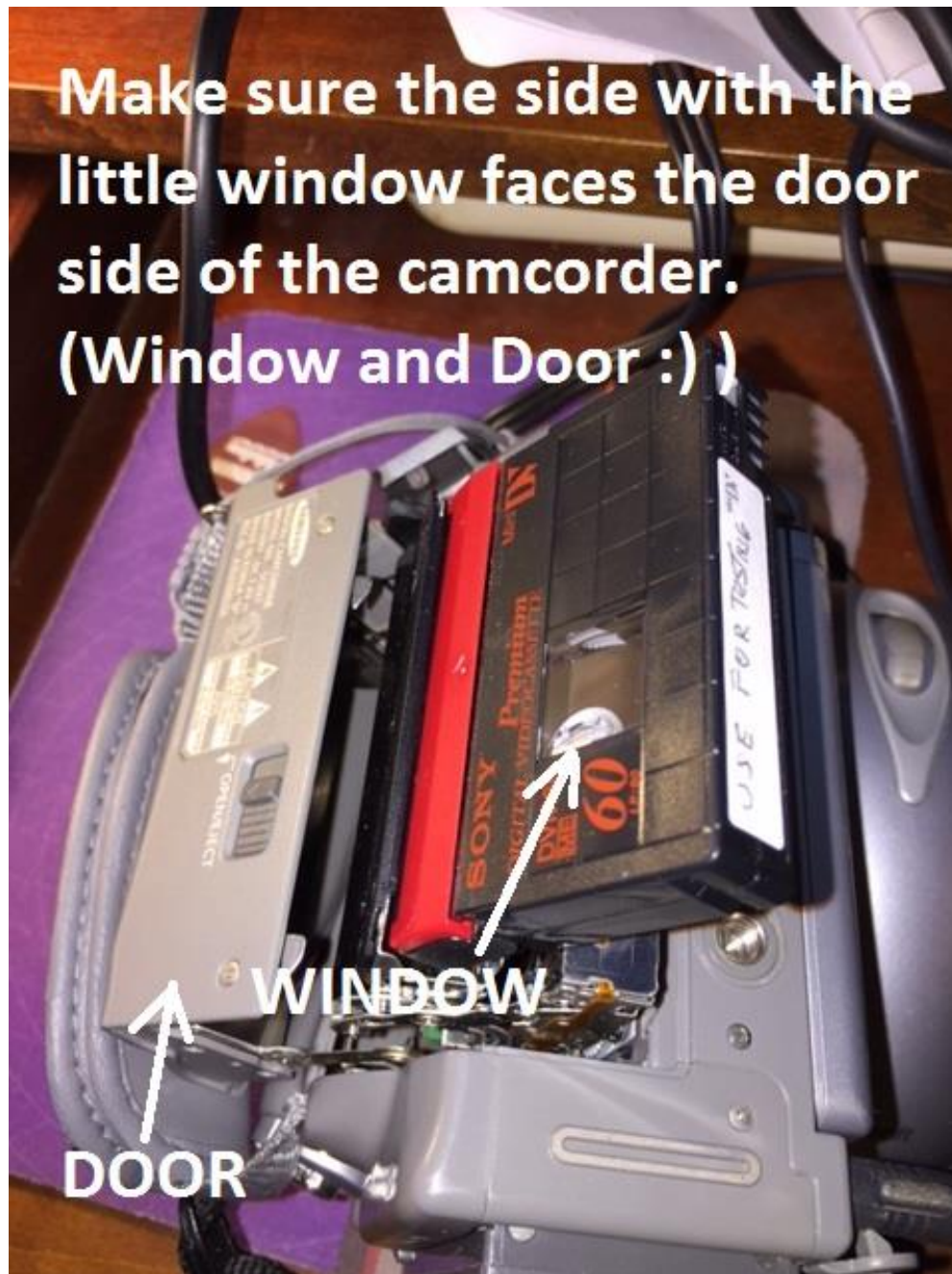


FIGURE 11 – Image showing window in cartridge facing cage door

Wait for tape to position itself in the carriage then Close the door.

Plug the S-Video cable into the S-Video connector and the Composite cable into the Audio Video connector. (Figure 12)

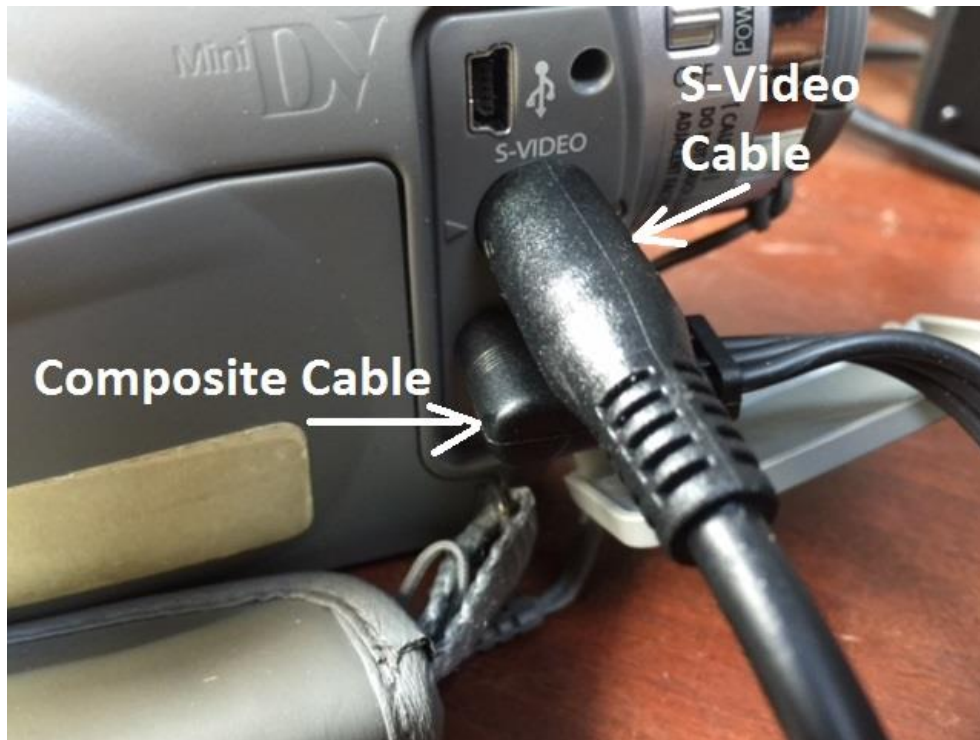


FIGURE 12 – Image showing S-Video and Composite cables inserted into connections

You can use just the Composite cable, but I found that the S-Video cable has a slightly higher quality resolution so I used it. The Composite cable still needs to be used for the Audio part of the transfer, so if you are using the S-Video cable, you will need to disconnect the Video connection (Yellow Cable) on the Composite cable. (Figure 13)

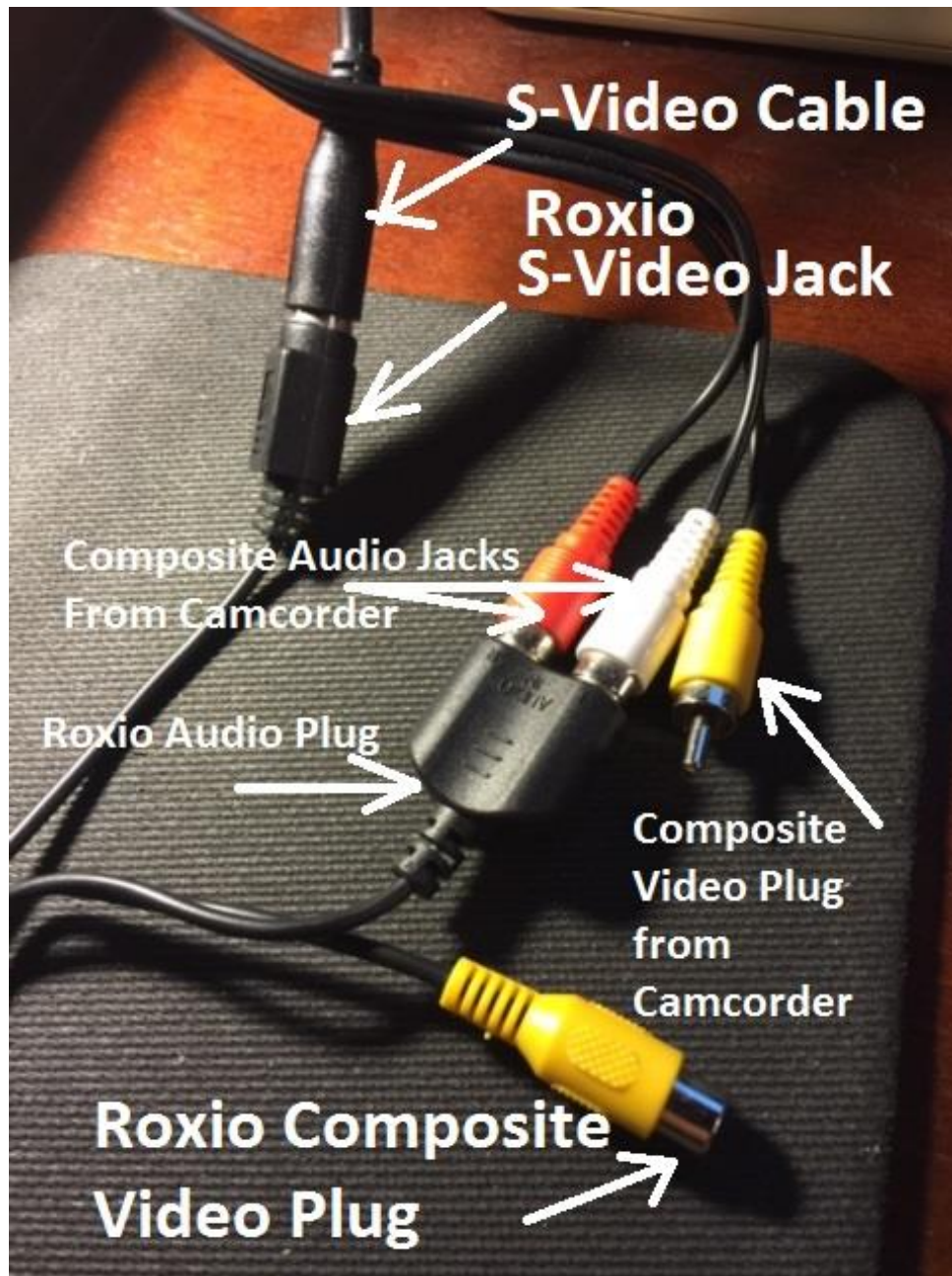


FIGURE 13 – Image showing video connector disconnected when using the S-Video cable

I then plugged the USB connector into the USB port of my PC.

After experimenting with the software for a while I found the simplest process was to click on the **Record, Edit and Save** button. (Figure 14)

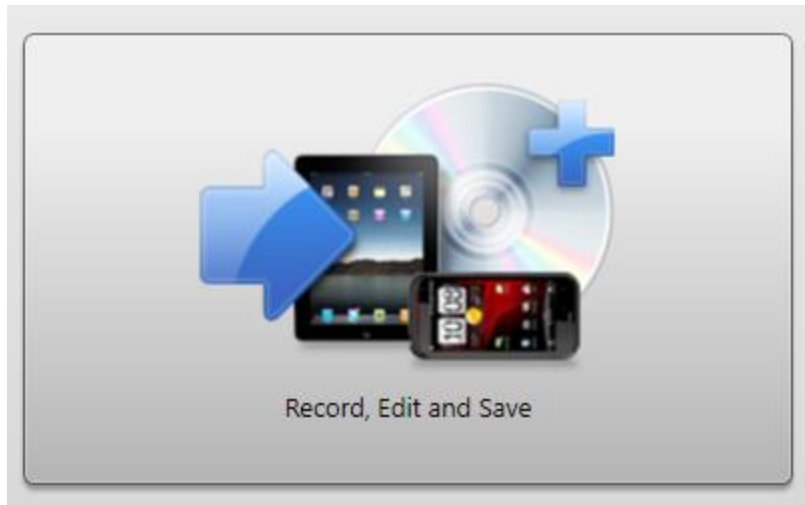


FIGURE 14 - Record, Edit and Save button

This brought up the Connect Roxio Video Capture screen. (Figure 15)

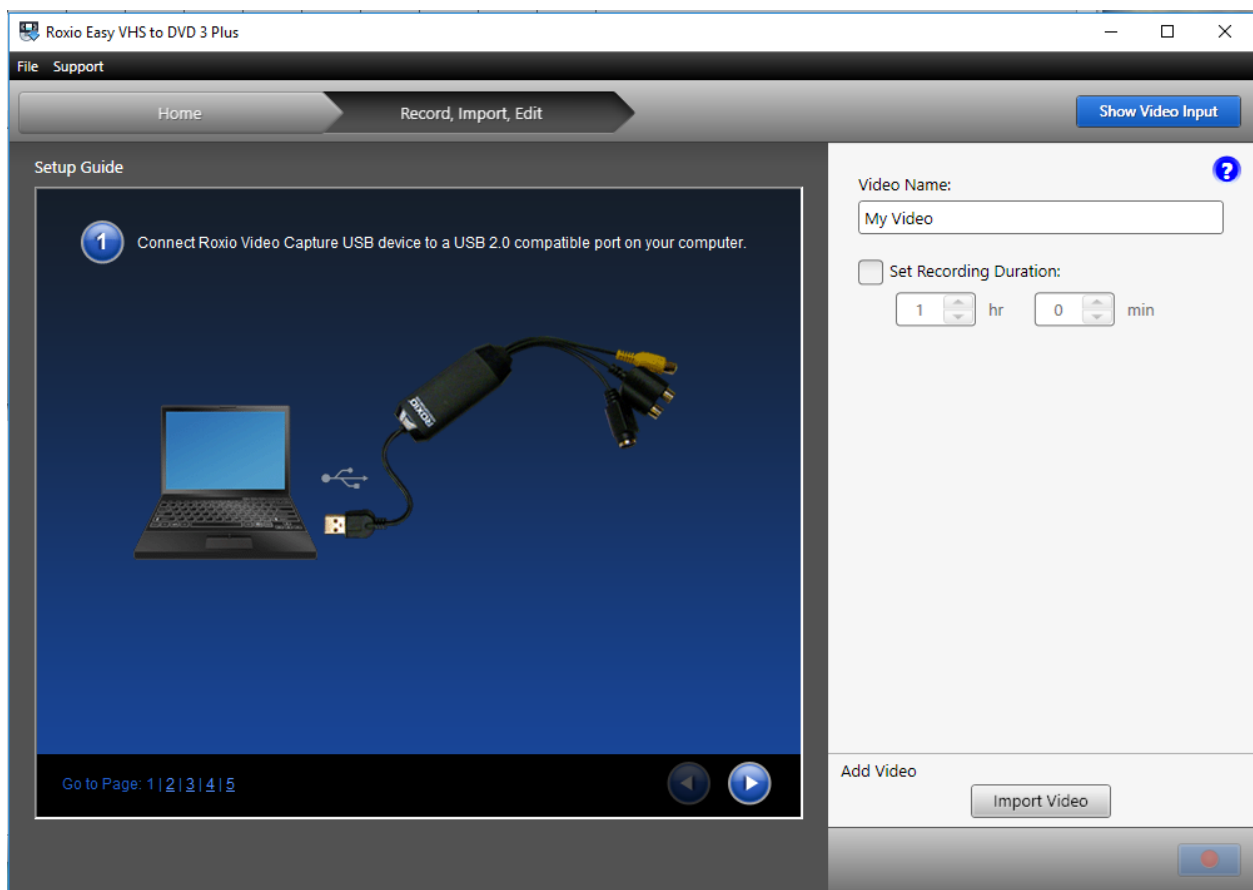


FIGURE 15 – Connect Roxio Video Capture Screen Image

Turn your camcorder switch to PLAYER mode by pressing down on the green button (Figure 16) on the PLAYER-OFF-CAMERA switch and turning it to PLAYER (Figure 17).



FIGURE 16 – PLAYER-OFF-CAMERA switch in OFF position



FIGURE 17 – PLAYER-OFF-CAMERA switch in PLAYER Position

This should change your Video Capture Screen to whatever shows up on your camcorder screen. (Figure 18)

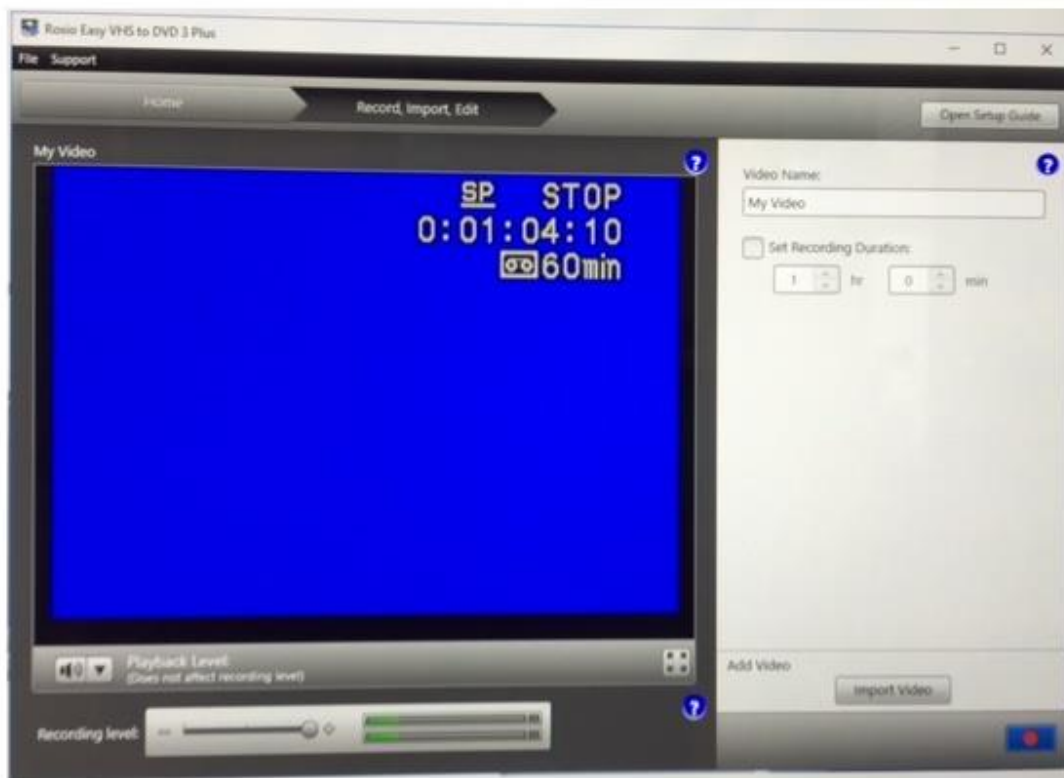


FIGURE 18 – Image showing what is viewed on the CAMCORDER in PLAYER mode.

Press the play button on the left side of the camcorder to see if the footage on the camcorder shows up on the capture screen. (Figure 19)



FIGURE 19 – Location of Play, Record, FFWD, REV and STOP buttons as well as DISPLAY Button

Toggle the DISPLAY button (Figure 19) to add the date, time and footage info on the screen.

NOTE: If this information is displayed while recording, it is recorded on the DVD footage.

In some cases gray lines were displayed on the playback screen. (Figure 20)



FIGURE 20 – Gray Lines displayed on Camcorder Screen during playback

I was able to eliminate the gray lines during playback on the camera for the transfer to DVD by RE-RECORDING over the beginning of the tape for the first ten seconds. Somehow this removed the lines and the playback worked fine after that. I don't know what causes the gray lines. It could be some kind of interlacing problem.

RECORDING ON PC

Place Camera in PAUSE mode (Figure 19) just before your recording start position. Click on the **Record, Edit and Save** button (Figure 21) to start your new project. The popup will ask: **What do you want to do?** To start your new Project click on **Start a new project** button. (Figure 22)

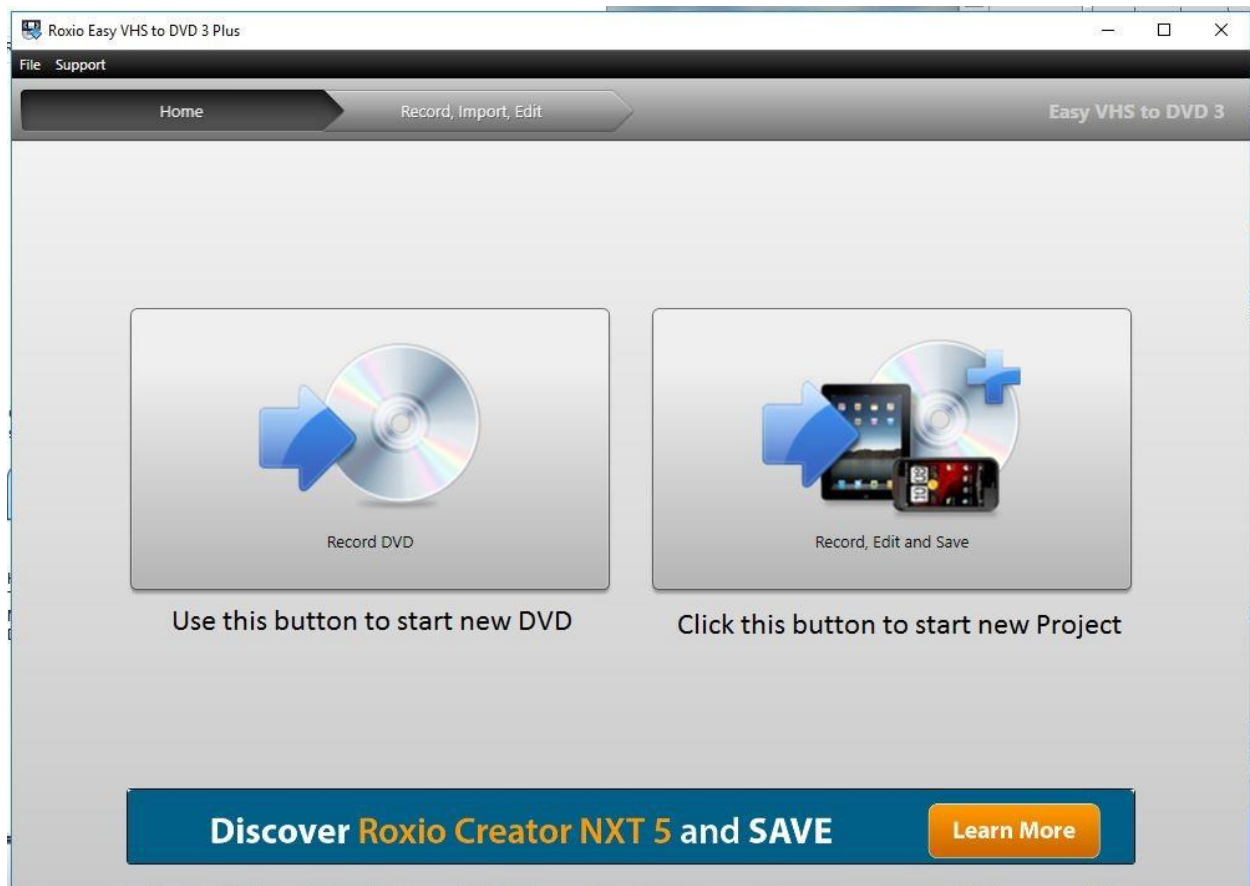


FIGURE 21 – New Project and New DVD screen - To start a new project click on Record, Edit and Save button.

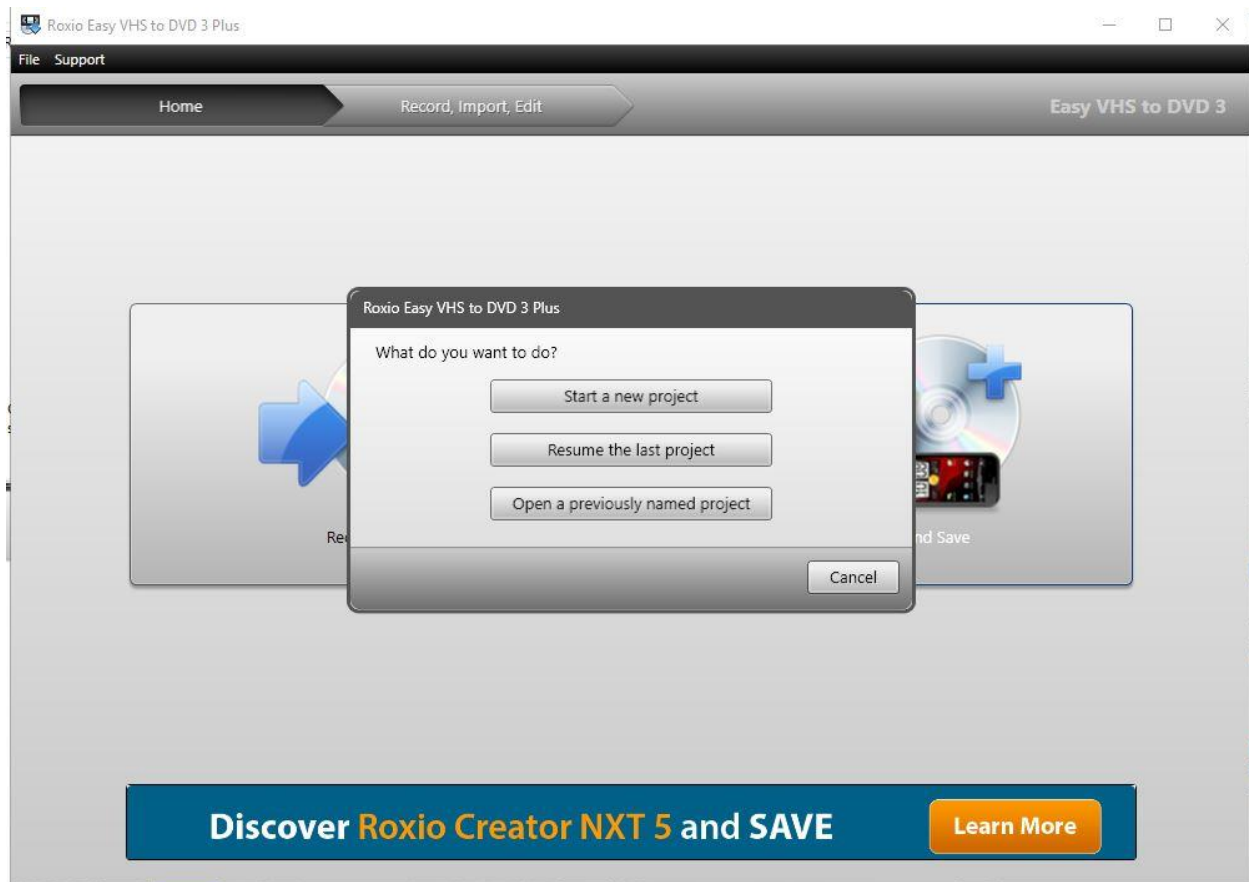


FIGURE 22 – **What do you want to do?** screen – To start a new project click on the **Start a new project** button.

If the screen is all blue (or whatever other color your background screen is) press the display button on the camera to display speed, time and duration info. This will show you if you are getting a signal from your camera to your PC. If it does not show up, then there is something wrong and you will need to troubleshoot your connections and settings.

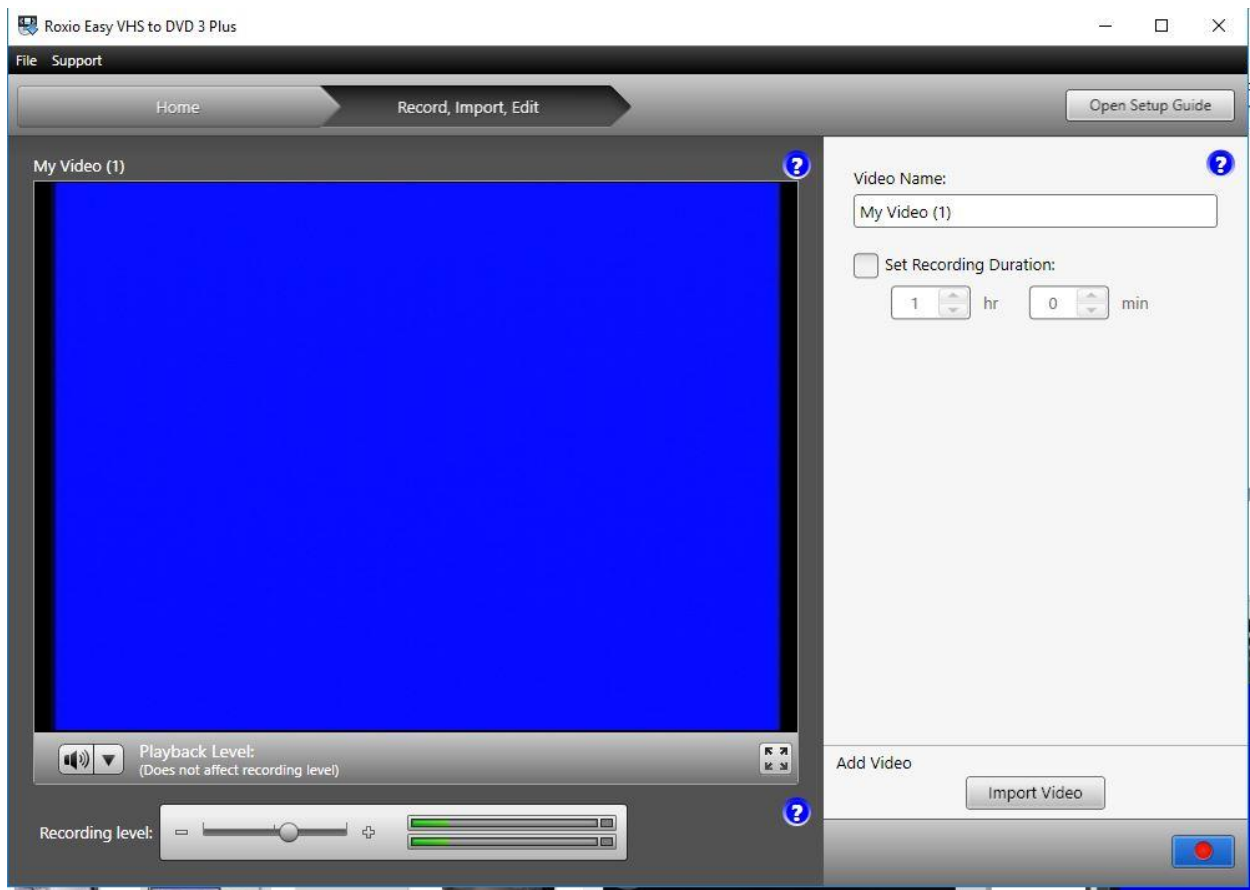


FIGURE 23 – ALL BLUE SCREEN – Toggle the display button on the camera to check for signal.

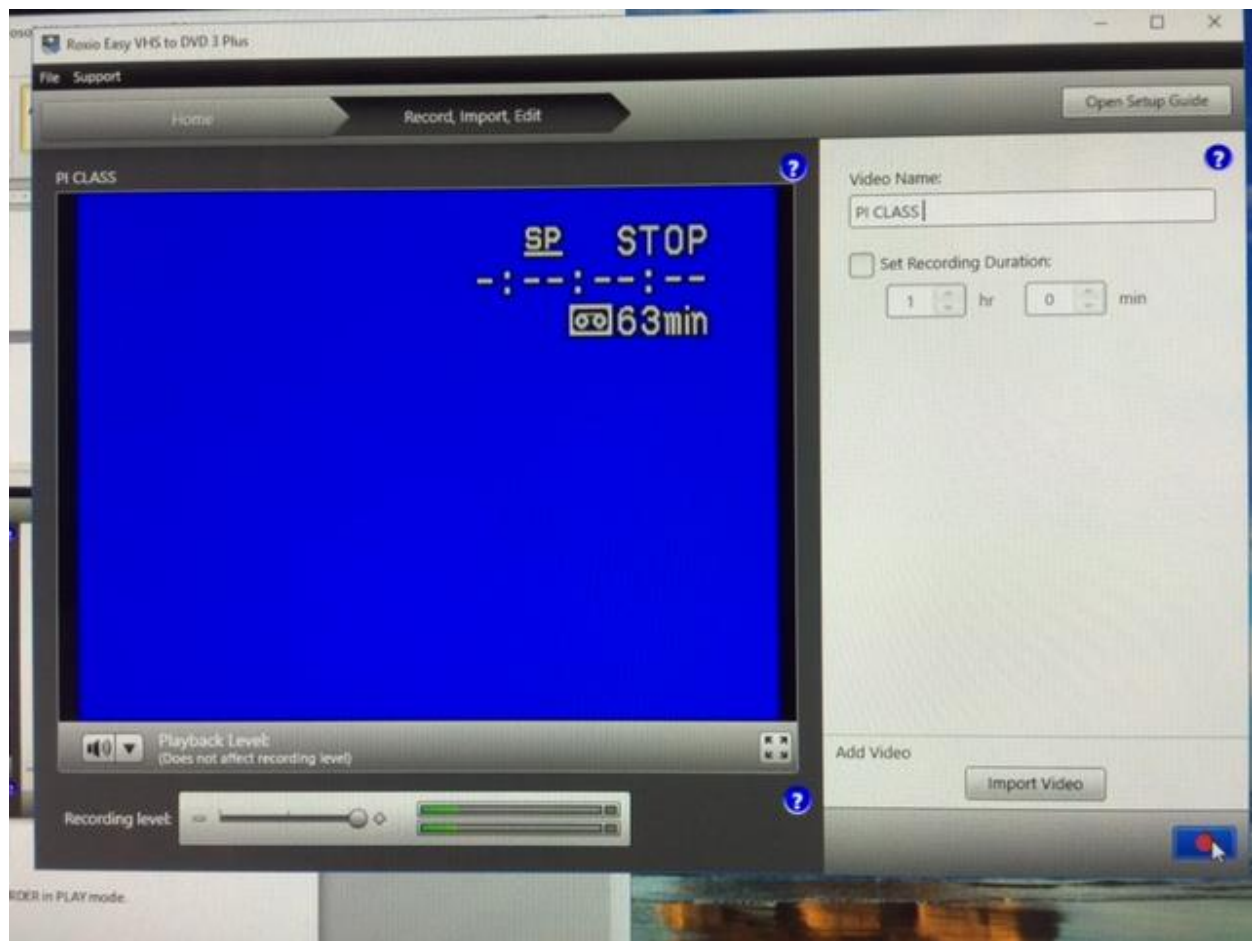


FIGURE 24 – BLUE SCREEN with TEXT – This shows you are getting a signal from the camera to the PC.

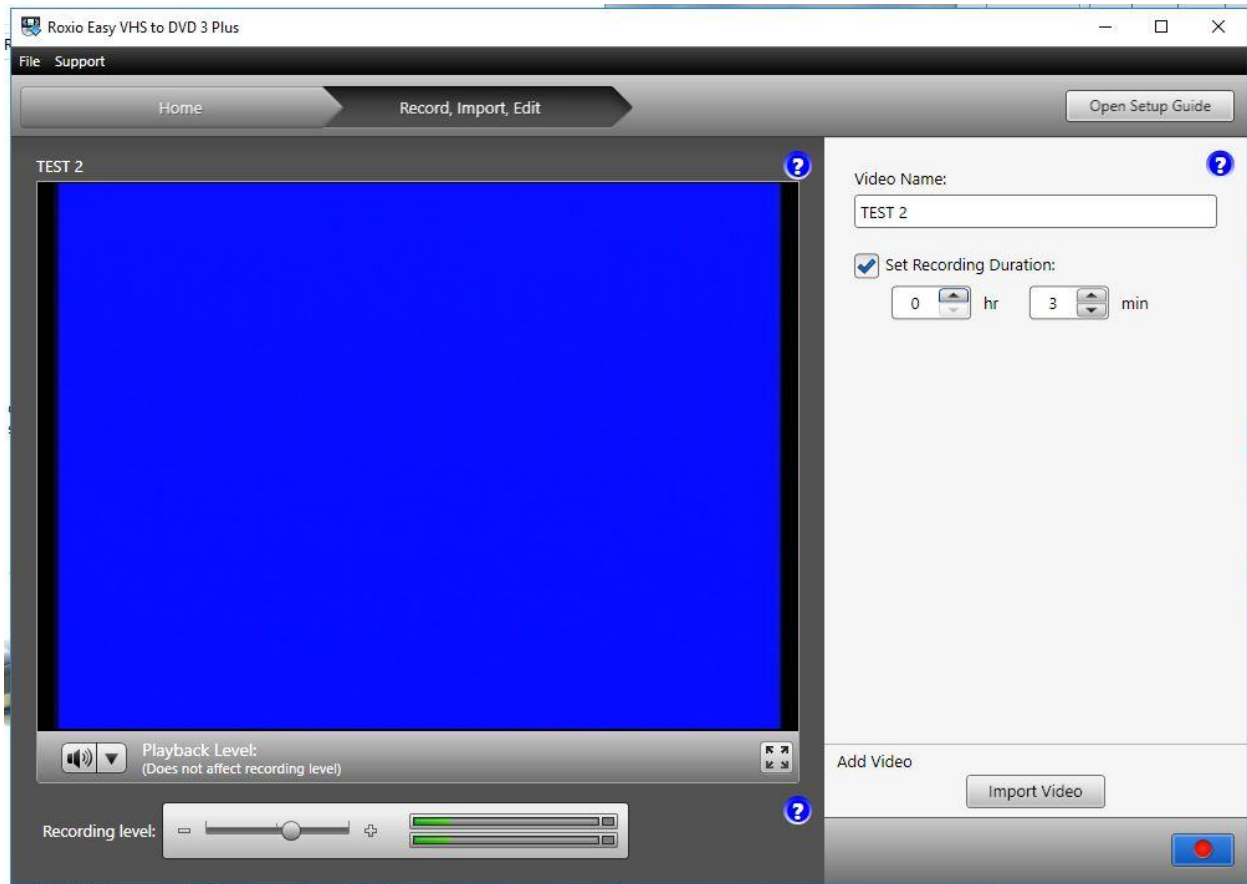


FIGURE 25 – VIDEO NAME SCREEN – This screen shot shows where to add the video's name and set the duration of recording by checking the **Set Recording Duration** checkbox. To not set the duration so you can stop it where you want, uncheck the checkbox.

To start recording, click on the record button in the lower right corner of the screen (Blue rectangle with red circle in it) (Figure 25). Once you click on the record button on the PC, press the play button on the camera. At this point you will see the same video image on both the PC and the camera. Also the duration of the video will be displayed on the PC screen, which includes time played and time left for a set duration. When the video has stopped by either end of duration or manual stopping by you, click on the arrow at the bottom right of the screen and move to the saving menu. (Figure 26)

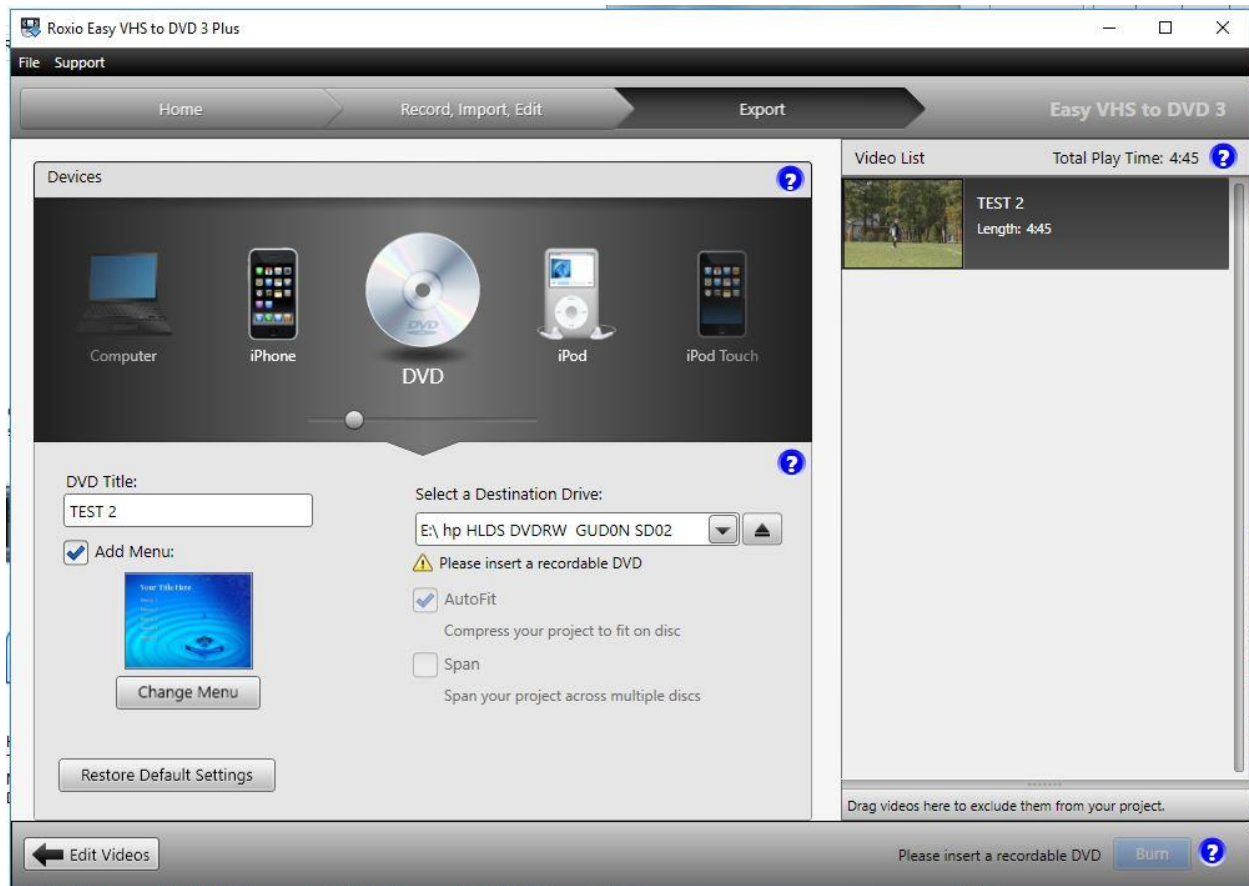


FIGURE 26 – SAVE MENU – NOTE: Nowhere on the screen does it say SAVE.

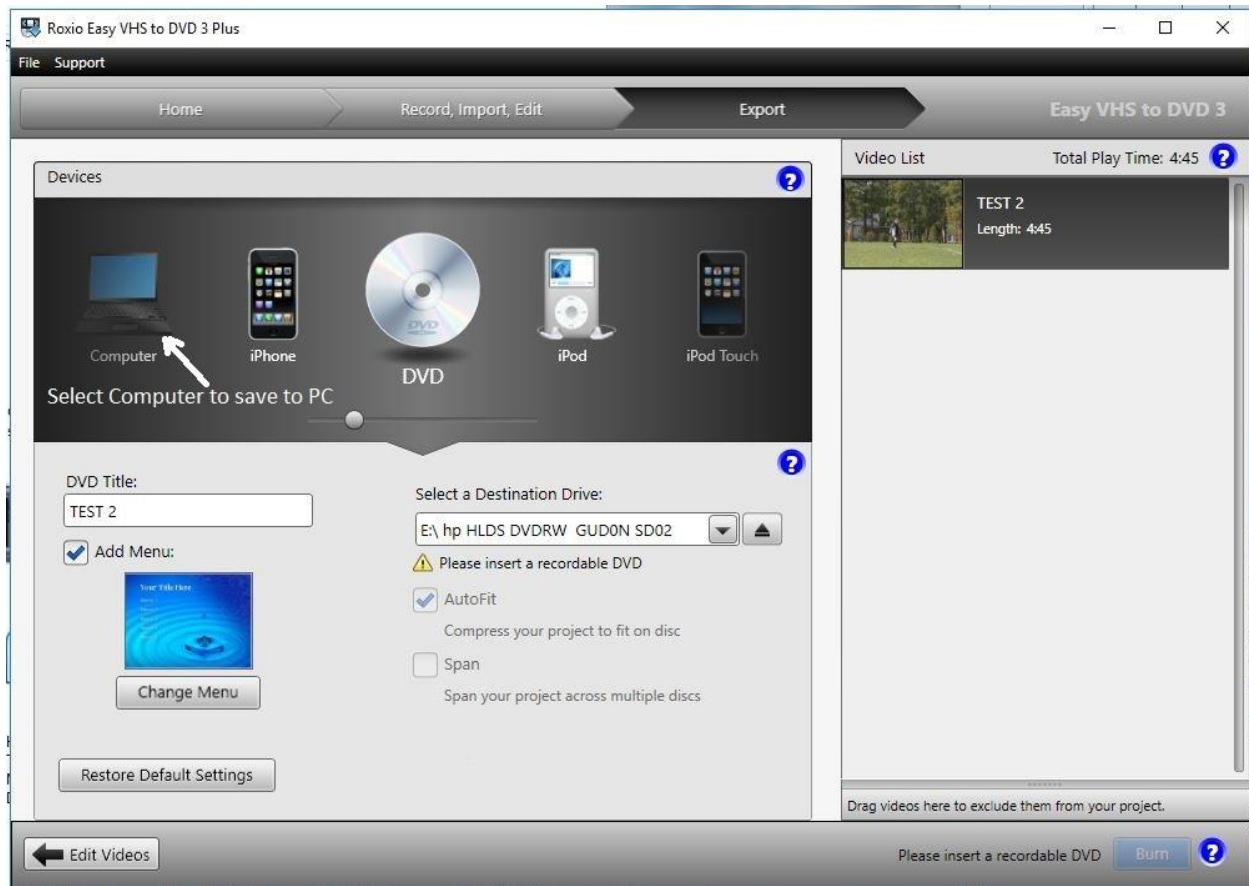


FIGURE 27 – SAVE MENU – Select Computer to SAVE your video to your PC.

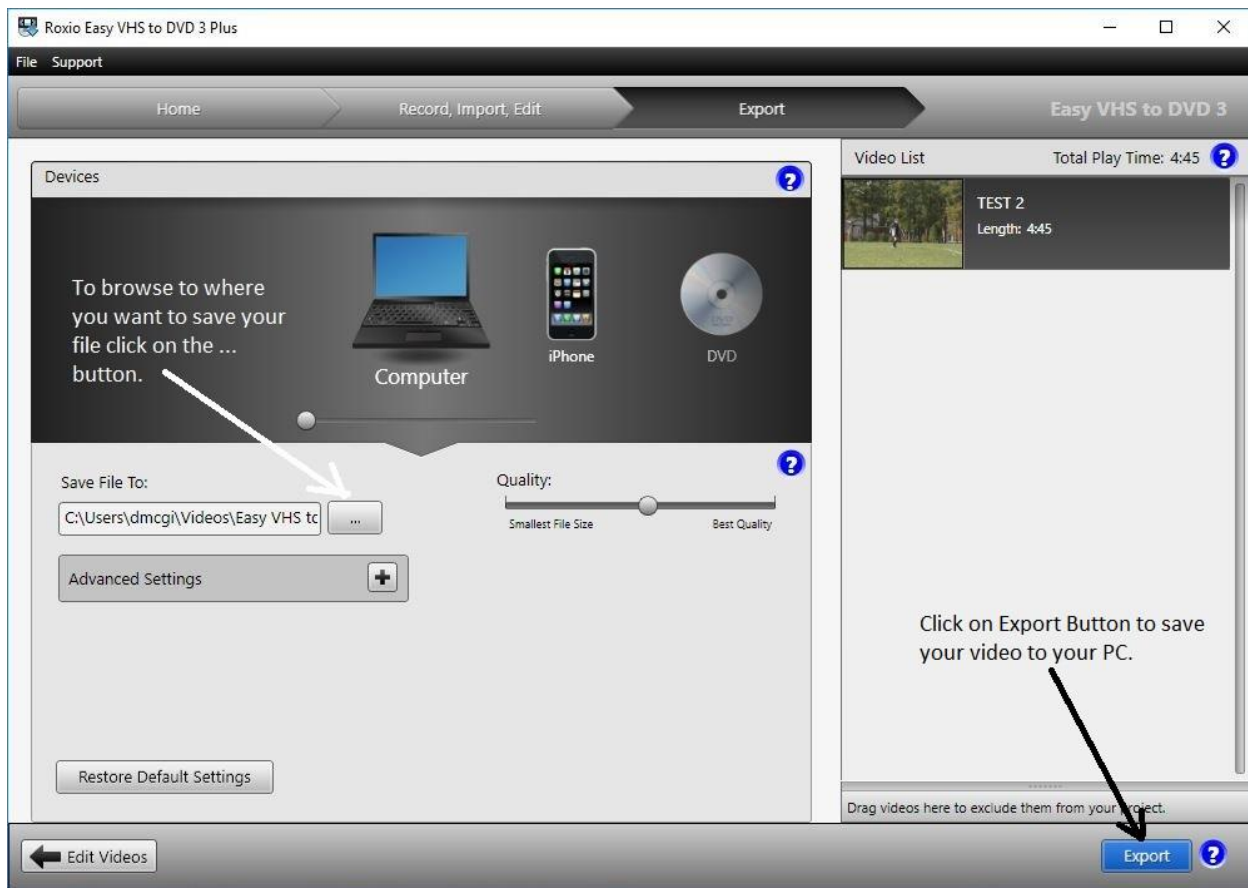


FIGURE 28 – SAVE MENU – Select the ellipsis (...) button to browse to your destination folder. Next, click on the **EXPORT** button to SAVE your video to your PC in your destination folder. A screen will pop up to show the percentage completion of the video being saved and finally a window with a checkmark indicating the video was completed successfully.

CREATING DVDs from your completed Videos

To burn a DVD from your completed videos, click on the **HOME** tab. A window will pop up and ask what the name of your Project is. Put in any name that you will recognize for future use and click on **YES**. (Or don't type anything and select **No** to not have a name.)

Next, click on the **Record, Edit and Save** button.

Click on **start a new project**.

Type in DVD VIDEO NAME. (Figure 29)

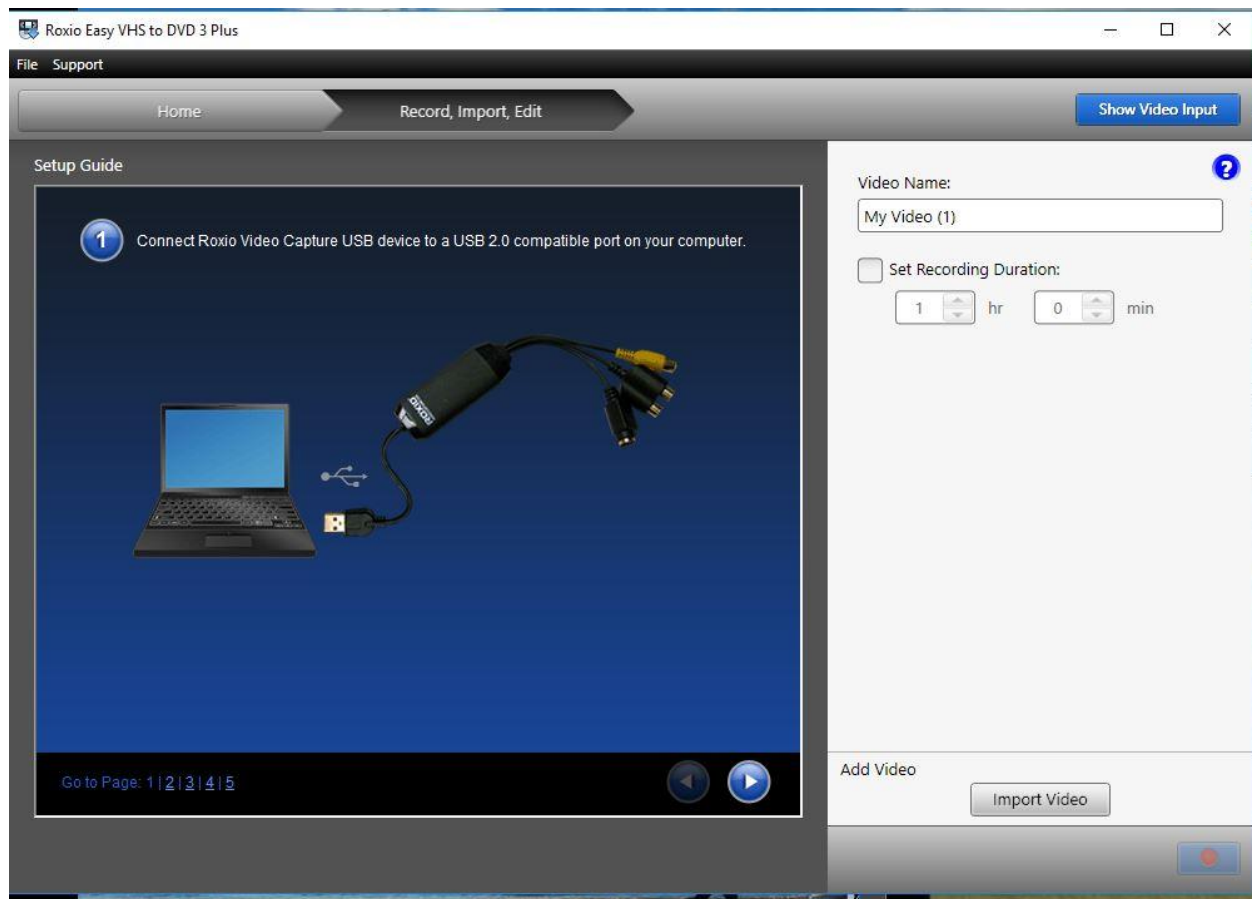


FIGURE 29 – SETUP GUIDE SCREEN – Use to import videos for burning to DVD.

Click on the **Import Video** button. Find videos you want to add to the DVD and import them.

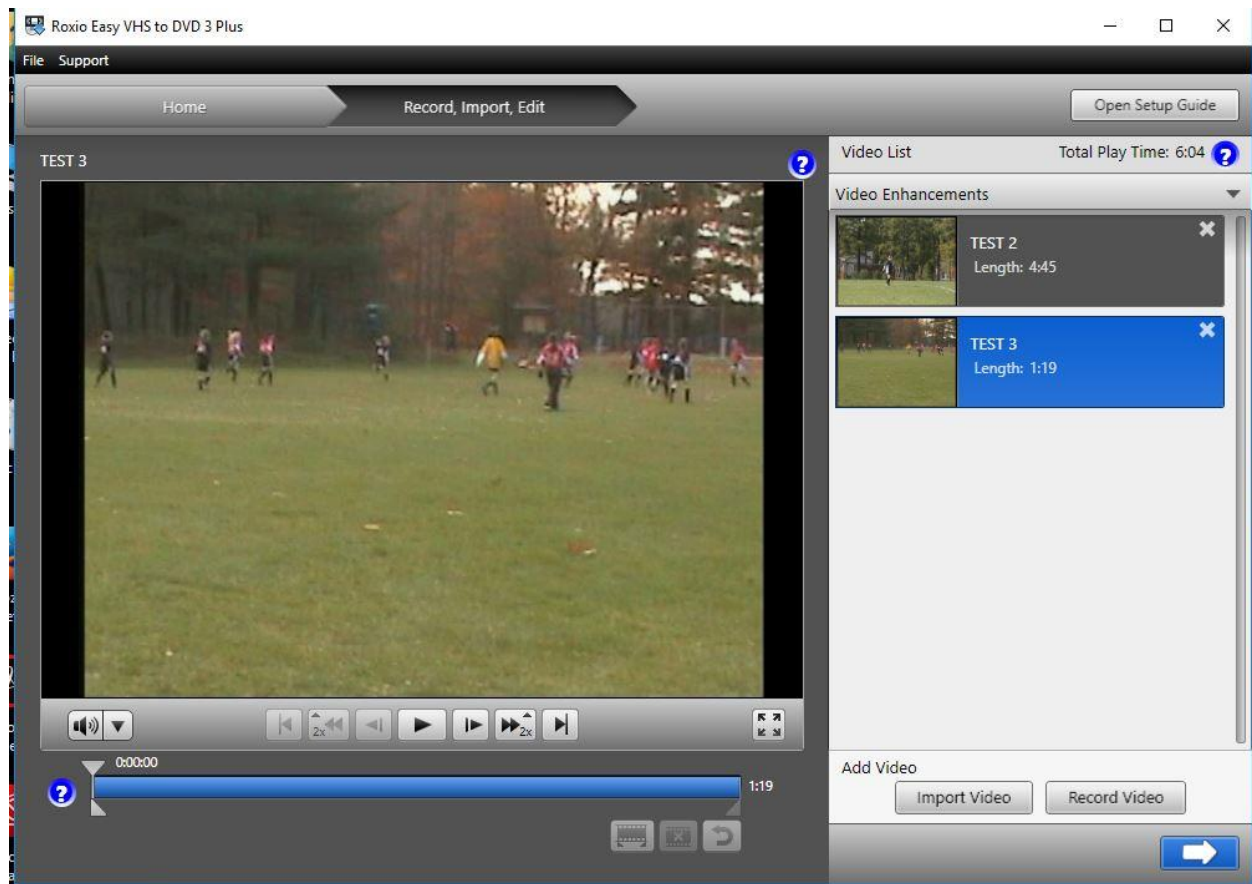


FIGURE 30 – VIDEO LIST –As videos are imported it creates a modular list of videos to be burned to DVD. You can remove a video from the list by clicking on the X in the upper right of each video module.

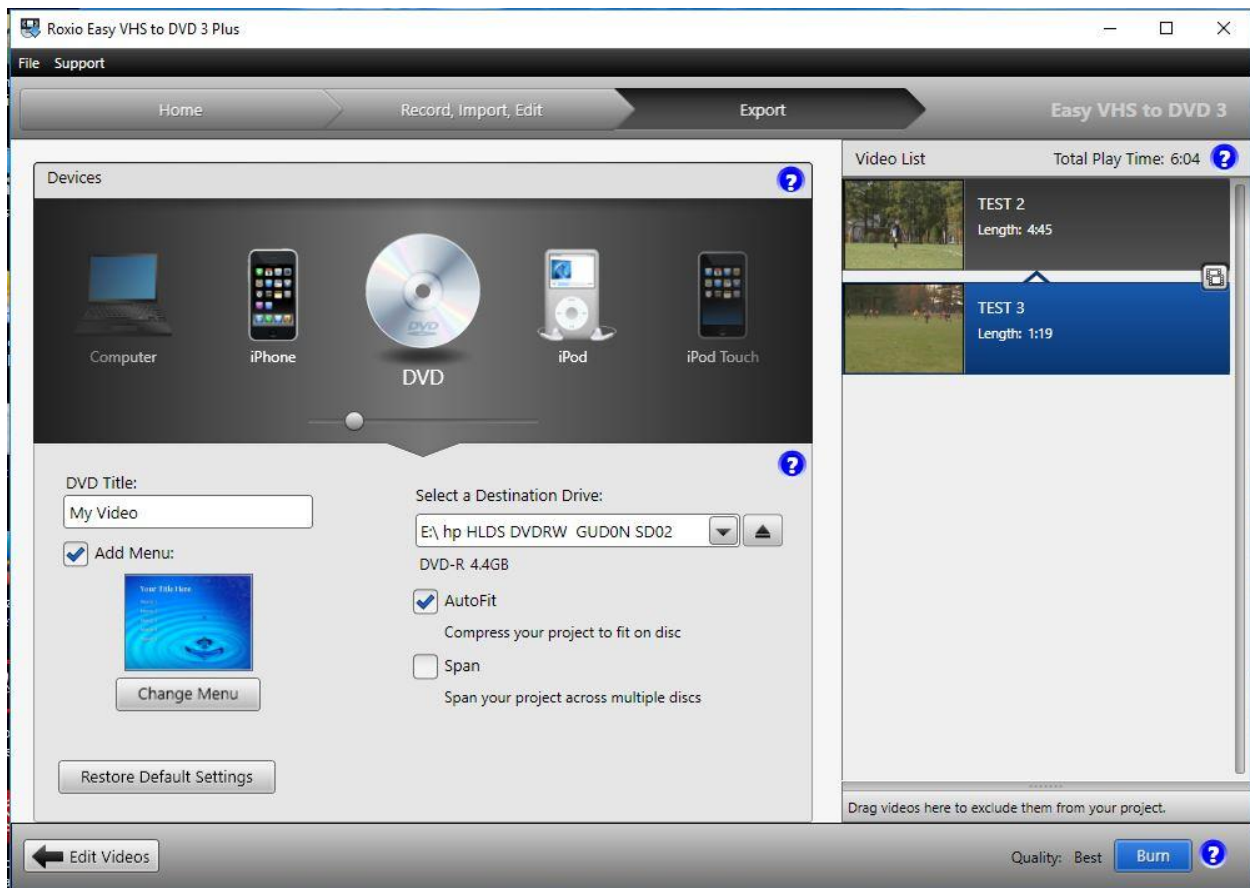


FIGURE 31- BURN MENU – This screen shows the videos that will be burned into the DVD, the title of the DVD and the Menu Type that will be seen upon opening the DVD. Click on the **BURN** button to start the burn process. It takes a while for the Burning process to complete. (Figures 32 and 33)

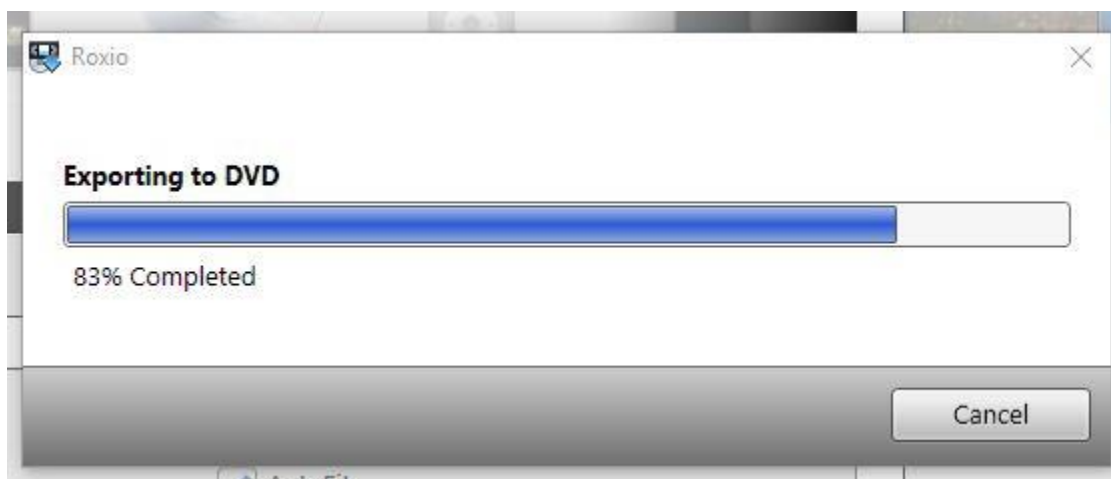


FIGURE 32 – EXPORTING TO DVD TIMER BAR

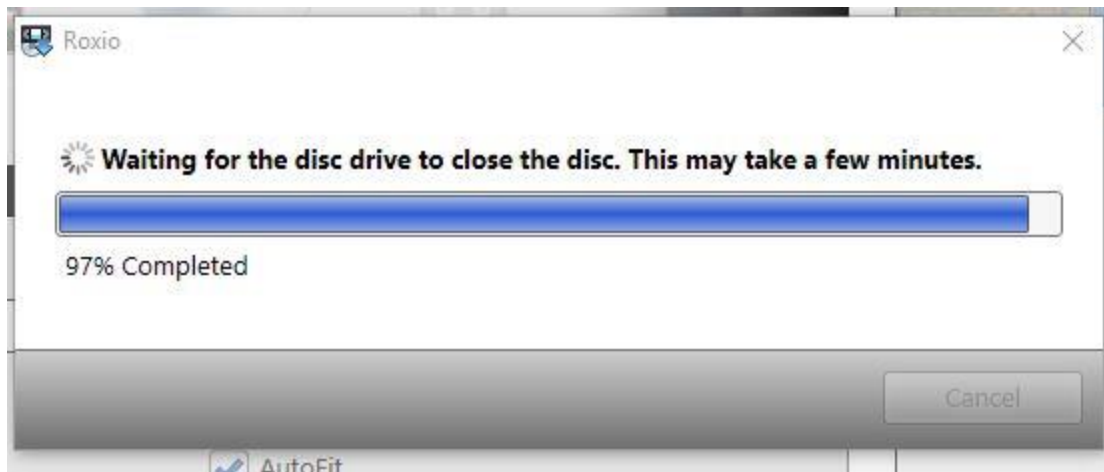


FIGURE 33 – DISC CLOSING TIMER BAR

Eventually the DVD will be complete and a checkmark will pop up.

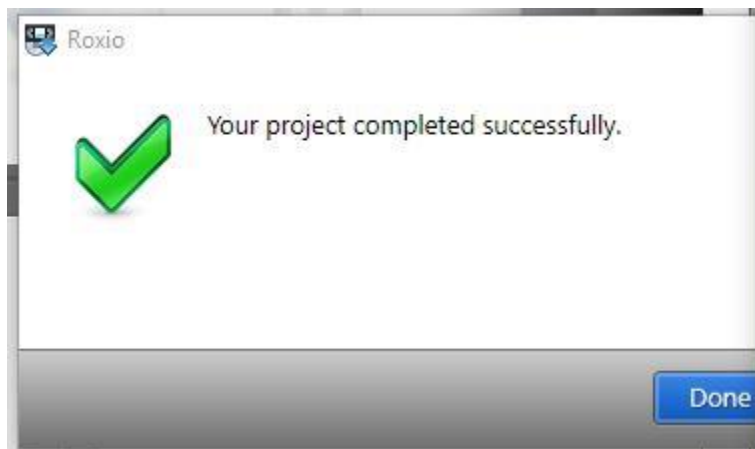


FIGURE 34 – Project Complete Pop up window. Click on the **Done** button to complete your end of the process.

By this time the DVD should have ejected from your DVD Drive. Push in the DVD Drive and wait for the default media player (like Windows Media Player) to pop up with your DVD Videos ready to start.

GOOD LUCK transferring your old video tapes. Better do it now before they fade forever. I haven't tried it yet but you should be able to use this program to transfer your VHS tapes to DVD as well.

Thanks for reading/using my document from a fellow video enthusiast.

Dennis